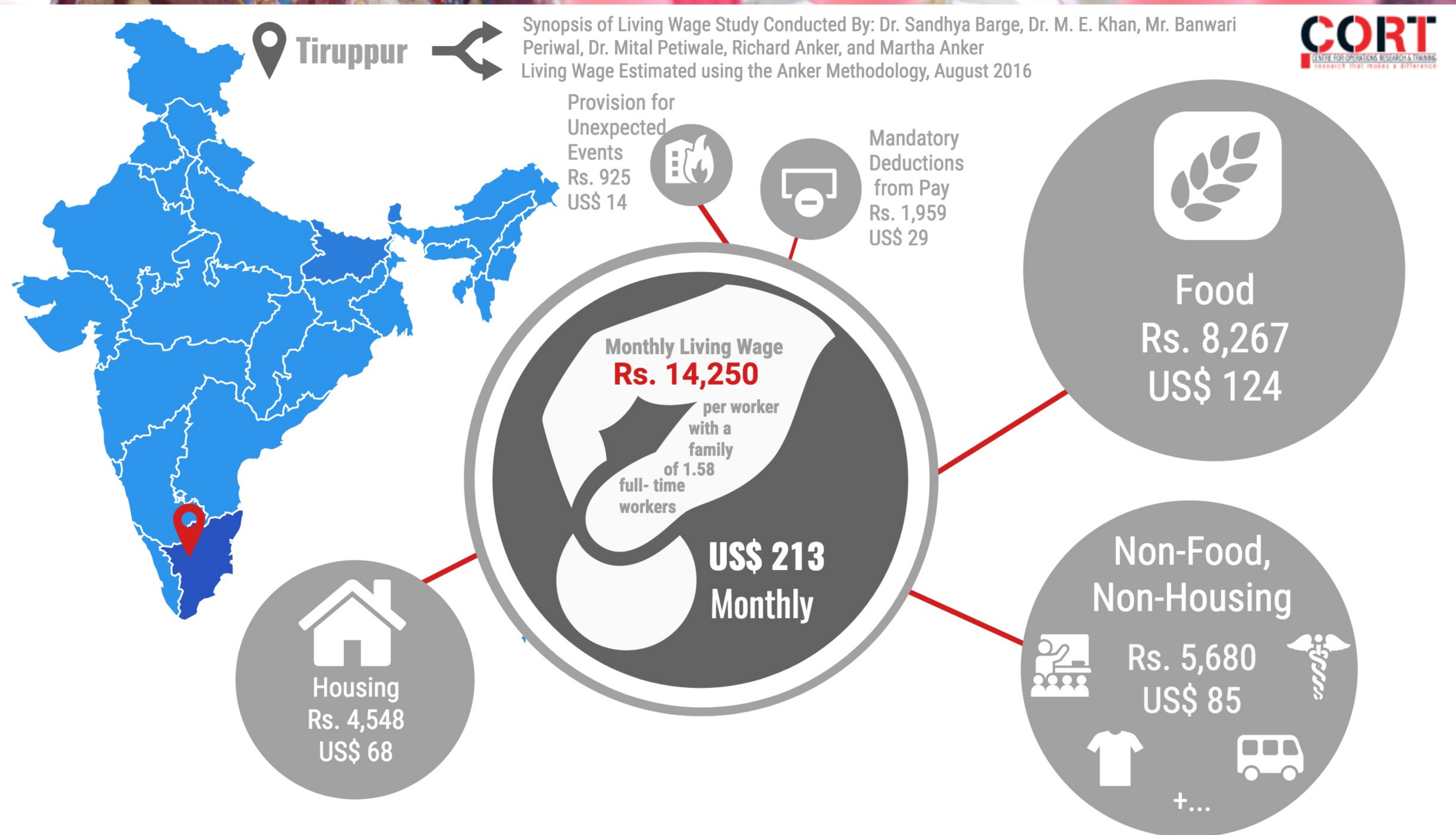


# Global Living Wage Series India

Tiruppur, Tamil Nadu, India



Photo Courtesy of Fairtrade International



## Local Housing Standard for Family

- Walls and floor are made of brick or cement
- Roof is either made up of concrete or has red tiles
- Piped water supply in the house or in close proximity
- Electricity
- House is well ventilated
- Separate kitchen area in the house and not shared
- Toilet facility (flush toilet or pit toilet with slab) available within house or in close proximity of house
- House has a "carpeted" floor size of at least of 388 ft<sup>2</sup> (36m<sup>2</sup>) of living space

## Model Diet grams per person per day

- 332g rice
- 40g wheat (ata)
- 25g potato
- 56g pulse (28g tur dal, 28g urad dal)
- 165g milk (1 cup for children, 1/4 cup cup for adults)
- 44g eggs (1 egg per day)
- 20g fish (1 fish for the family per week)
- 15g chicken (1 portion per week broiler chicken)
- 150g vegetables (50g spinach, 50g eggplant, 50g tomato)
- 50g onion
- 20g coconut
- 67g fruits (banana)
- 27g oil (2 tbsp.)
- 28g sugar (7 tsp.)
- 2g tea (2 cups for adults)



## Context Provided for Tiruppur Garment and Textile Sector

### Monthly Living Wage for Tiruppur in Rs.

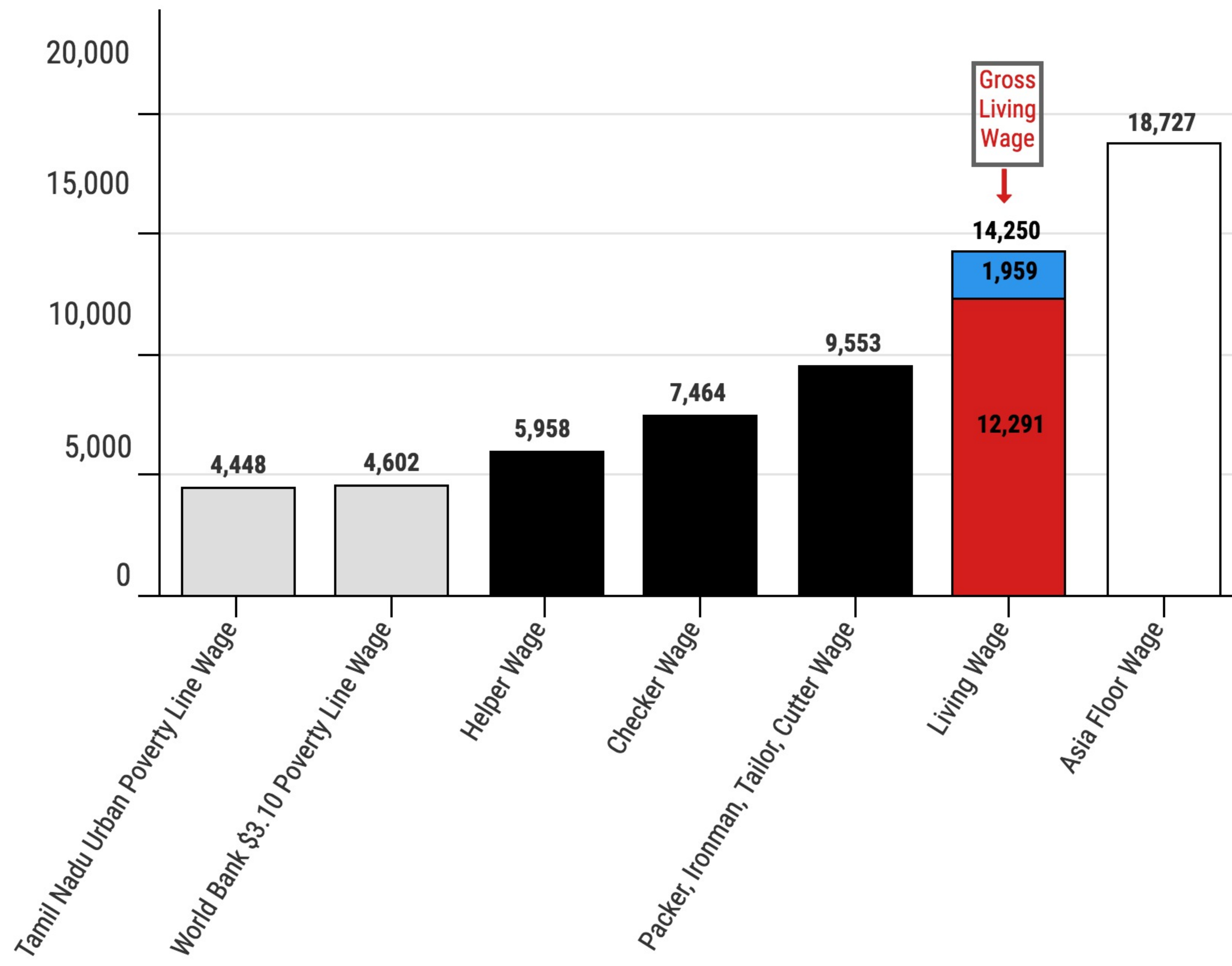
### Key Values and Assumptions

- 48 Hour Work Week
- 26 Work Days Per Month

- Exchange Rate US \$1 = Rs. 66.88

- Family Size of 4
- 2 Adults, 2 Children
- 1.58 Workers Per Family

Total Monthly Living Wage = ((Food + Housing + Non-Food, Non-Housing + Provision for Unexpected Events) ÷ Number of full-time Workers in Family) + Mandatory Deductions from Pay



Register for Regular Benchmark Updates from the GLWC at <http://eepurl.com/b6Jlyf>

[www.globallivingwage.org](http://www.globallivingwage.org)

Legend: Poverty Wages (Grey), Wage Benchmarks (White), Tiruppur Bilateral Wage Agreement 2016 Wages (Black), Mandatory Deductions (Blue), Net Living Wage (Red)

**GLOBAL LIVING WAGE COALITION**

Global Living Wage Coalition Members: Fairtrade International, Forest Stewardship Council, GoodWeave International, Rainforest Alliance, Social Accountability International, Sustainable Agriculture Network, and UTZ. In Partnership with the ISEAL Alliance and Richard Anker and Martha Anker

Made Possible by the Generous Support of:



Ministry of Foreign Affairs of the Netherlands